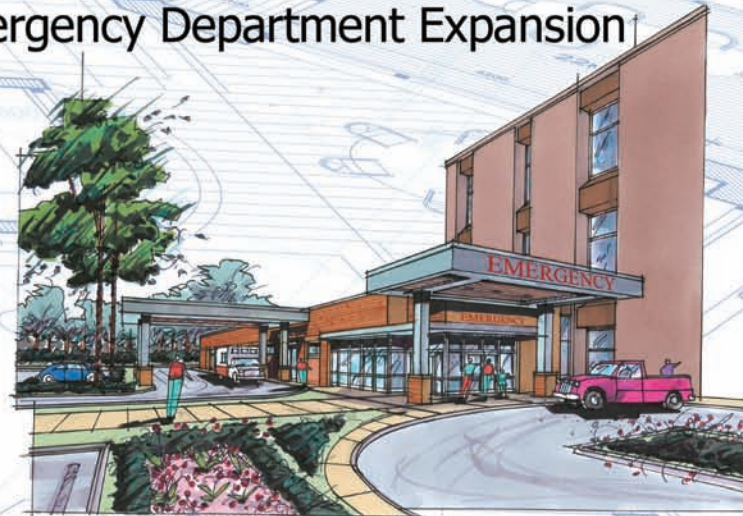


# Growing Services for the Eastern Panhandle

City Hospital's  
Emergency  
Department  
Expansion



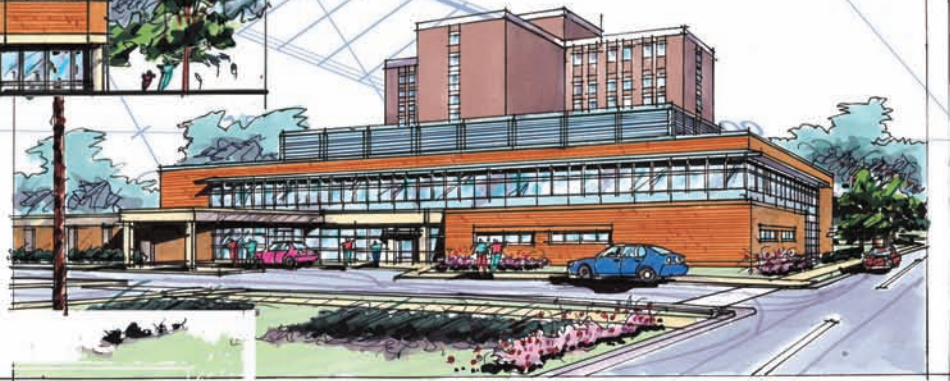
Jefferson Memorial Hospital's  
Emergency Department Expansion



Inwood Urgent Care & Medical Center



City Hospital's  
Permanent Cath Lab and  
New 20-Bed ICU/CCU



For more information on these  
projects or inquiries on project bids,  
please contact the Marketing Department  
at 304-264-1223.



**WVUH • EAST**

WEST VIRGINIA UNIVERSITY HOSPITALS

*"A Member of West Virginia United Health System"*

[www.wvuh-east.org](http://www.wvuh-east.org)